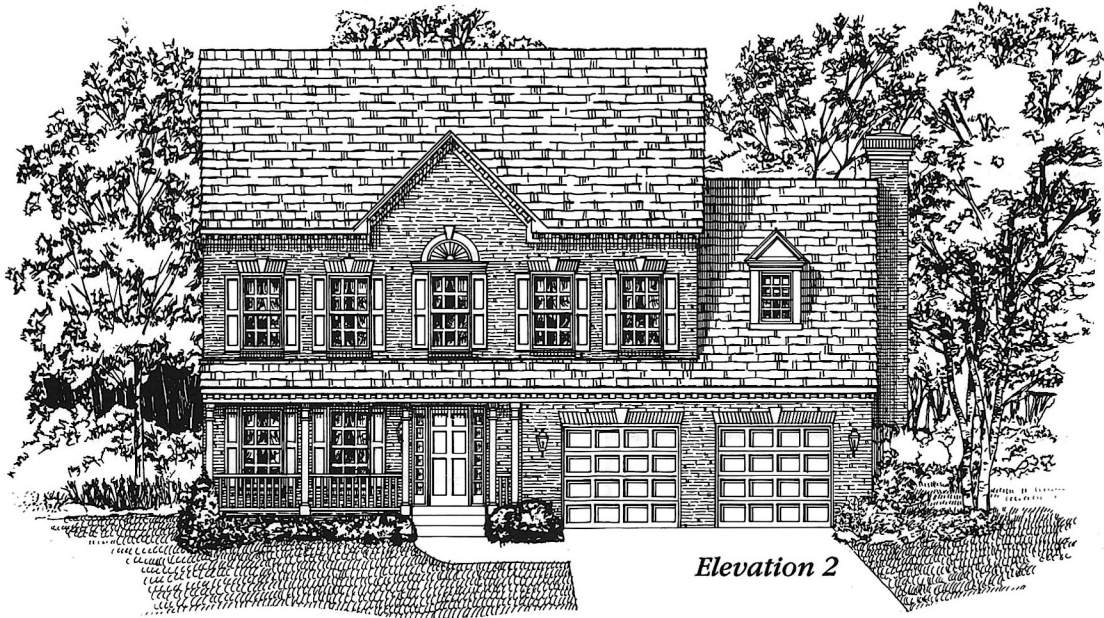


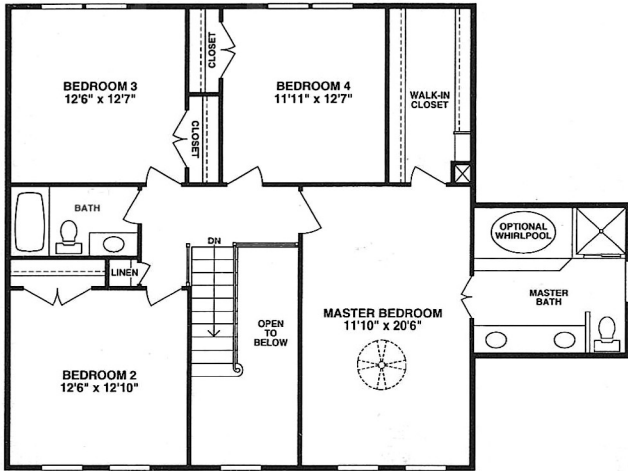
# THE VIRGINIA II



**R**ivermead  
HOMES  
A Tradition Of Excellence  
Across The World

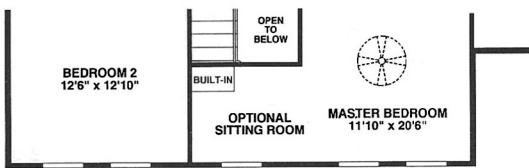
# THE VIRGINIA II

You'll realize The Virginia II is an exceptional home from the moment you enter the dramatic 2-story hardwood foyer. On the left, the elegant 19' living room with its custom crown moulding has a classic look, and you can make this room even more special by adding a fireplace. The gourmet kitchen with its large pantry provides a central focus for the first floor, and makes it easy to serve family or guests—through a double-door entrance to the charming dining room, or across a counter to the cozy breakfast nook, where a large bay window adds to the zest of informal dining. In the family room, a sliding glass door provides open vistas, and the fireplace helps to create a cheerful gathering place. Completing this superb layout, there's a convenient coat closet and a powder room.

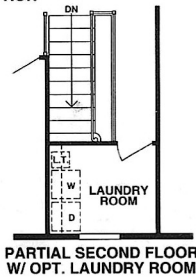


ELEVATION 1

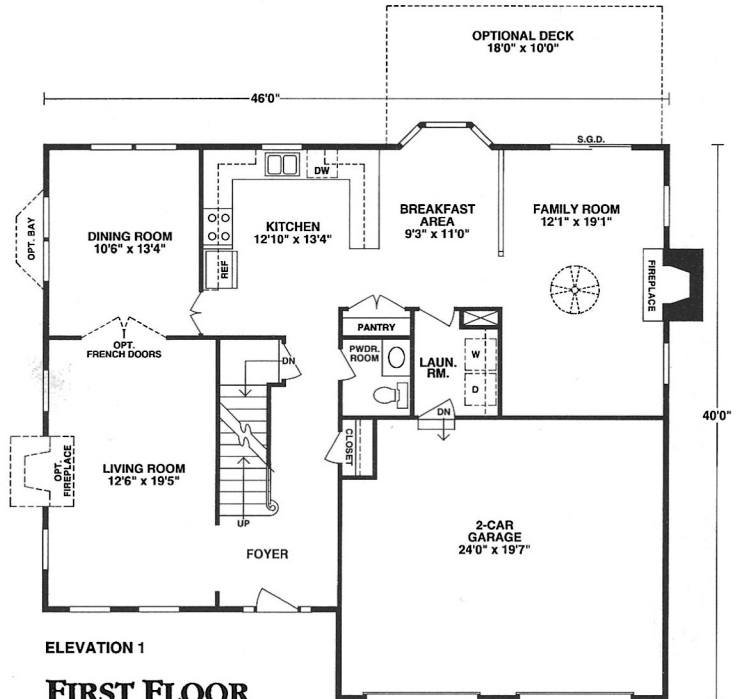
## SECOND FLOOR



ELEVATION 2  
SITTING ROOM OPTION



PARTIAL SECOND FLOOR  
W/ OPT. LAUNDRY ROOM



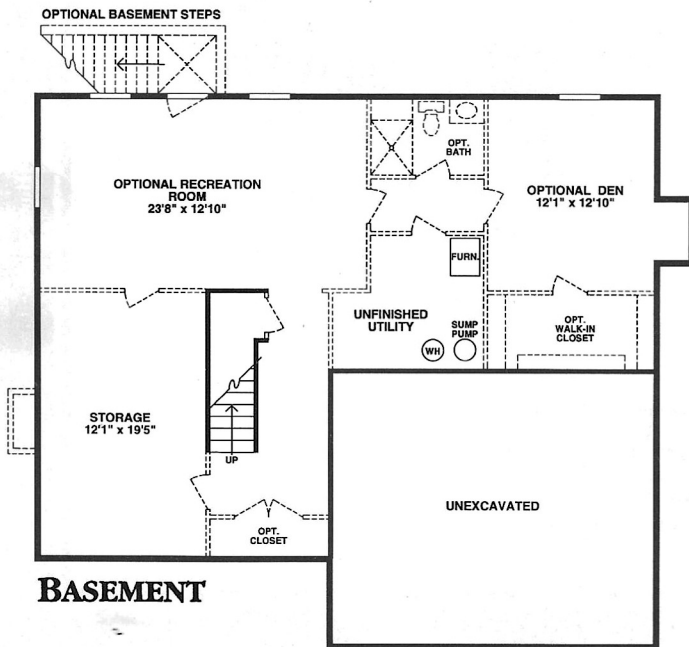
ELEVATION 1

## FIRST FLOOR



OPTIONAL ELEVATION 2

FIRST FLOOR



## BASEMENT

The highlight of the second floor, occupying its own private area, is the exquisite master bedroom suite; it features a large walk-in closet, and a luxury master bath with soaking tub and separate shower. Three more attractive bedrooms and another full bath are also found on this level.

The Virginia II's lower level can be customized with a rec room and den, and this splendid home includes a two-car garage. The grounds are professionally landscaped to provide a final touch.

Details and dimensions shown on these floor plans are approximate and subject to change. Illustrations are artist's concepts and may vary in detail from plans and specifications.

